

Land For Sale

Cincinnati, OH



FEATURES

- **Approximately 1.5 acres**
- Flat topography
- Great access to I-275
- Ideal for landscaper, garden center, excavator.
- \$199,000/acre

LOCATION

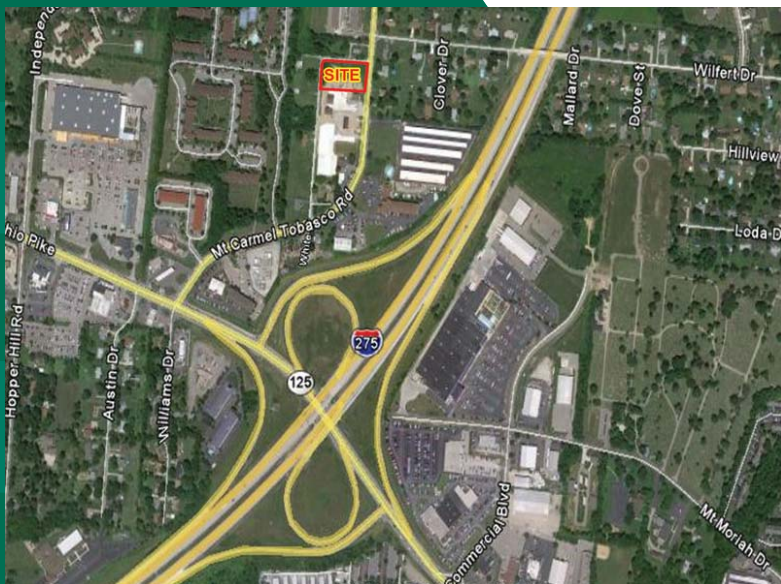
**4065 Mt. Carmel Tobasco
Cincinnati, OH 45255**

CONTACT

Karen Duesing

karen.duesing@everestrealstate.com

513/769-2518



The information submitted is not guaranteed. Although obtained from reliable sources, it is subject to errors, omissions, prior sale and withdrawal from the market without notice.



COMMERCIAL REAL ESTATE SERVICES

WEB www.everestrealstate.com TEL 513-769-2500 FAX 513-769-2512

9912 Carver Road, Sycamore Office Park, Suite 100, Cincinnati, Ohio 45242

FISHER STREET (24')

MT CARMEL ~ TOBASCO ROAD

THIS AREA FOR FUTURE USE
4.211 Ac (183,422 Sq Ft) Gross
3.856 Ac (167,958 Sq Ft) Net
AUXIER PROPERTIES, LLC
1065 Mt. Carmel-Tobasco Rd.
Cincinnati, OH 45295
Tax Par. #413218.054P
O.R. 2038, PG. 2489
4.211 Ac
ZONED: B1

ZONED: R1

WHITE STREET

KANT

BEAULT

COLETT

COLETT

COLETT

COLETT

COLETT

COLETT

COLETT

ZONED: R1

THIS AREA FOR FUTURE USE

PROPOSED BAGGED PRODUCT STORAGE
PROPOSED CONCRETE

PROPOSED RENTAL BUILDING
50,500 S.F.
PROPOSED CONCRETE

PROPOSED PARKING AREA
9 SPACES

PROPOSED BULK PRODUCT STORAGE
PROPOSED CONCRETE

PROPOSED STORM WATER MANAGEMENT BASIN

PROPOSED BAGGED PRODUCT STORAGE

LANE G. & DEBORAH E. SCHATER
O.R. 1407 PG. 1091
ZONED: B1

