

Office Warehouse For Sale

5101 Creek Road



LOCATION

**5101 Creek Road
Blue Ash, Ohio 45242**

FEATURES

- **12,688 Total SF Available**
- 3,554 SF of office
- Great Blue Ash Location
- Convenient Interstate Access
- Beautiful Class A Office Space
- Drive-in Access
- Air conditioned warehouse/showroom
- Completely Renovated 2005:
 - Slate tile
 - Exposed ceilings
 - Directional lighting
 - Upgraded carpet

CONTACT

Adam Simon

adam.simon@everestrealstate.com

513/769-2507



The information submitted is not guaranteed. Although obtained from reliable sources, it is subject to errors, omissions, prior sale and withdrawal from the market without notice.

Everest is the Greater Cincinnati/
Northern Kentucky affiliate for:



A world of real estate expertise with over 200 offices in Canada, U.S., Europe, Asia, South America, and Australia.



COMMERCIAL REAL ESTATE SERVICES

WEB www.everestrealstate.com TEL 513-769-2500 FAX 513-769-2512

9912 Carver Road, Sycamore Office Park, Suite 100, Cincinnati, Ohio 45242

5101 Creek Road

Address/City/County:	5101 Creek Road/Blue Ash/Hamilton Cty.
Total Building Size:	18,714 SF
Total Available:	12,688 SF
Office Area:	3,554 SF
Land Size:	1.07 acres
Date of Construction:	1969
Date of Renovation:	2005
Zoning:	Light Industrial
Construction:	Concrete Block & Steel
Truck Access:	1 - 10' x 10' drive-in door
Clearance:	16'
Electric:	480 Volt, 3 Phase
Lighting:	Halide and Florescent
Roof:	Rubber Membrane
Sale Price:	\$1,425,000 (\$76.15/SF)

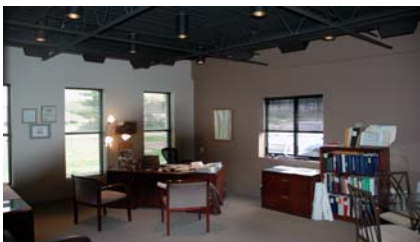


www.everestrealstate.com

TEL 513-769-2500

FAX 513-769-2512

9912 Carver Road
Sycamore Office Park
Suite 100
Cincinnati, Ohio 45242



FOR MORE INFORMATION, CONTACT

Adam Simon

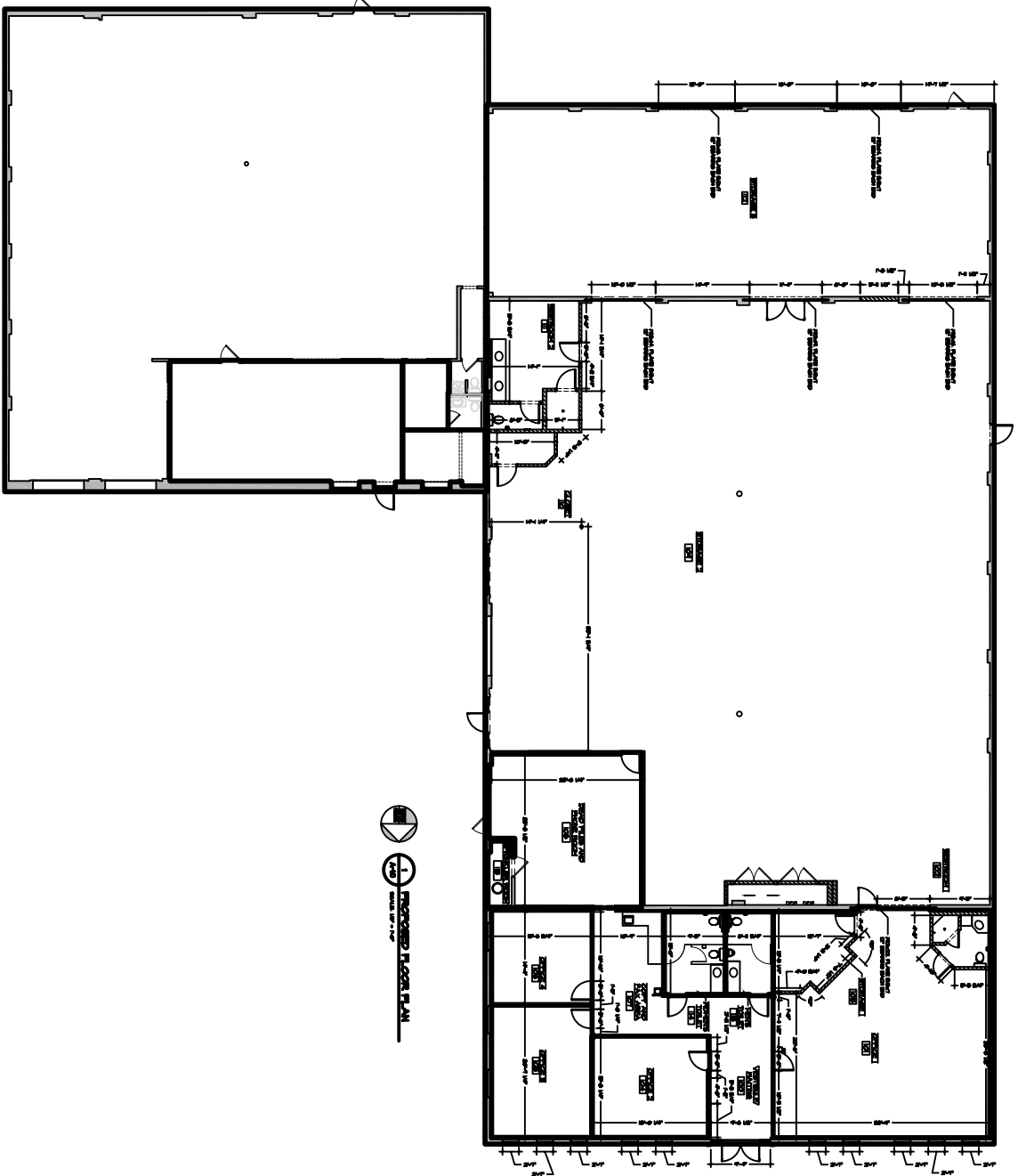
adam.simon@everestrealstate.com

513/769-2507

Everest is the Greater Cincinnati/
Northern Kentucky affiliate for:



A world of real estate expertise
with over 200 offices
in Canada, U.S., Europe,
Asia, South America,
and Australia.



ENCLOSED FLOOR PLAN

**FLOOR PLAN
DETAILS
SCHEDULES
AND NOTES**

SCALE: 1/8" = 1'-0"

DATE: 11/11/11

PROJECT: ANDREW GREENS BUILDING

LOCATION: 5101 CREEK ROAD, CINCINNATI, OHIO

DESIGNED BY: [Name]

CHECKED BY: [Name]

DATE: 11/11/11

PROJECT NO: 08-0460

SCALE: 1/8" = 1'-0"

DATE: 11/11/11

GREENRealty Corp.

ANDREW GREENS BUILDING
5101 CREEK ROAD
CINCINNATI, OHIO 45242

Interloch Design Services, Inc.
Architectural and Engineering Services

11111 W. WILSON AVENUE
SUITE 100
CINCINNATI, OHIO 45242
TEL: 513.963.1111
WWW.INTERLOCHDESIGN.COM

GENERAL NOTES:

- ALL WORK SHALL BE IN ACCORDANCE WITH THE LATEST EDITIONS OF THE INTERNATIONAL BUILDING CODES AND ALL APPLICABLE LOCAL ORDINANCES.
- ALL WORK SHALL BE IN ACCORDANCE WITH THE LATEST EDITIONS OF THE INTERNATIONAL MECHANICAL AND ELECTRICAL CODES AND ALL APPLICABLE LOCAL ORDINANCES.
- ALL WORK SHALL BE IN ACCORDANCE WITH THE LATEST EDITIONS OF THE INTERNATIONAL PLUMBING AND MECHANICAL CODES AND ALL APPLICABLE LOCAL ORDINANCES.
- ALL WORK SHALL BE IN ACCORDANCE WITH THE LATEST EDITIONS OF THE INTERNATIONAL FIRE AND SAFETY CODES AND ALL APPLICABLE LOCAL ORDINANCES.
- ALL WORK SHALL BE IN ACCORDANCE WITH THE LATEST EDITIONS OF THE INTERNATIONAL ENERGY CONSERVATION CODES AND ALL APPLICABLE LOCAL ORDINANCES.
- ALL WORK SHALL BE IN ACCORDANCE WITH THE LATEST EDITIONS OF THE INTERNATIONAL SMOKE AND ALARM CODES AND ALL APPLICABLE LOCAL ORDINANCES.
- ALL WORK SHALL BE IN ACCORDANCE WITH THE LATEST EDITIONS OF THE INTERNATIONAL ACCESSIBILITY STANDARDS AND ALL APPLICABLE LOCAL ORDINANCES.
- ALL WORK SHALL BE IN ACCORDANCE WITH THE LATEST EDITIONS OF THE INTERNATIONAL SAFETY STANDARDS AND ALL APPLICABLE LOCAL ORDINANCES.
- ALL WORK SHALL BE IN ACCORDANCE WITH THE LATEST EDITIONS OF THE INTERNATIONAL HEALTH AND SAFETY STANDARDS AND ALL APPLICABLE LOCAL ORDINANCES.
- ALL WORK SHALL BE IN ACCORDANCE WITH THE LATEST EDITIONS OF THE INTERNATIONAL ENVIRONMENTAL STANDARDS AND ALL APPLICABLE LOCAL ORDINANCES.

A-10