

Industrial Space For Lease

West Chester

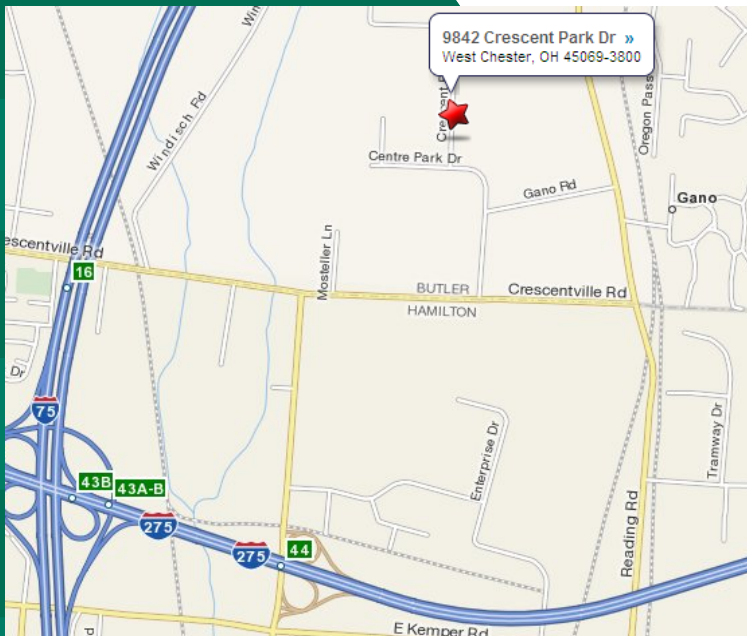


FEATURES

- **3,000-6,000 SF Units Available**
- 600-800 SF office
- One dock door per unit
- One drive-in door per unit
- Great access to I-275

LOCATION

**9840-9852 Crescent Park Drive
West Chester, OH 45069**



CONTACT

Jeff Wolf, SIOR, CCIM

jeff.wolf@everestrealstate.com

513/769-2519

The information submitted is not guaranteed. Although obtained from reliable sources, it is subject to errors, omissions, prior sale and withdrawal from the market without notice.



COMMERCIAL REAL ESTATE SERVICES

WEB www.everestrealstate.com TEL 513-769-2500 FAX 513-769-2512

9912 Carver Road, Sycamore Office Park, Suite 100, Cincinnati, Ohio 45242

9840-9852 Crescent Park Dr.

Address/City/County: 9840-9852 Crescent Park Drive
West Chester/Butler Cty.

Square Footage: Three 3,000 SF units

Type of Construction: Block / brick veneer

Clearance Height: 12'

Floor: Concrete

Drive In Doors: 10' x 10'

Truck Doors: 8' x 10'

Sprinkler: No

Lighting: Fluorescent

Parking: 10 cars

Electric: 220 V & 110 V

Roof: Asphalt Shingle

Heat & A/C: Gas unit

Lease Rate: \$4.80/SF gross

<u>Suite #</u>	<u>SF Available</u>	<u>Office SF</u>
9840*	3,000	800
9842*	3,000	800
9860	3,000	600

*contiguous to 6,000 SF



FOR MORE INFORMATION, CONTACT

Jeff Wolf, SIOR, CCIM

jeff.wolf@everestrealstate.com

513/769-2519

www.everestrealstate.com

TEL 513-769-2500

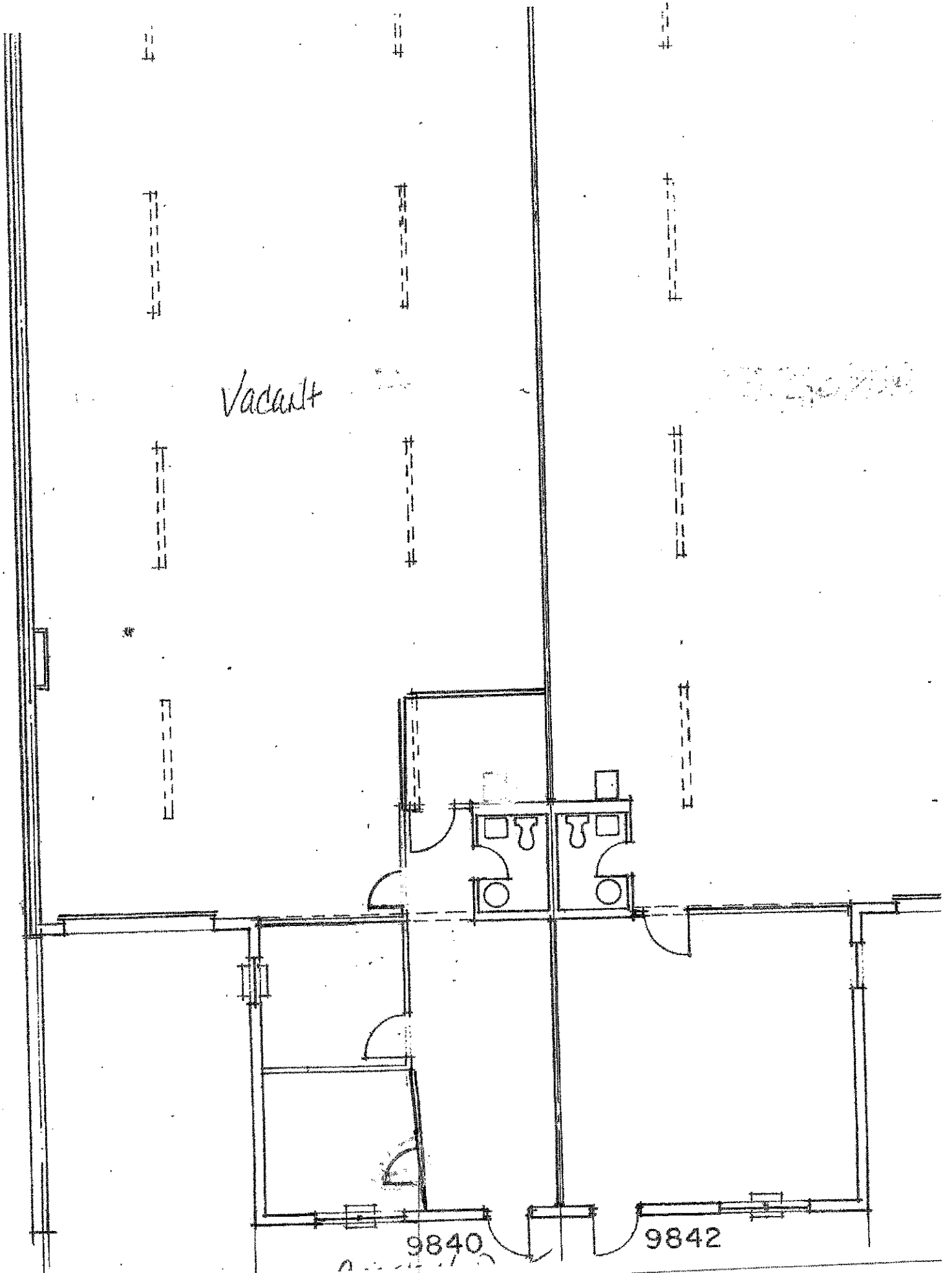
FAX 513-769-2512

9912 Carver Road

Sycamore Office Park

Suite 100

Cincinnati, Ohio 45242



Vacant

9840

9842