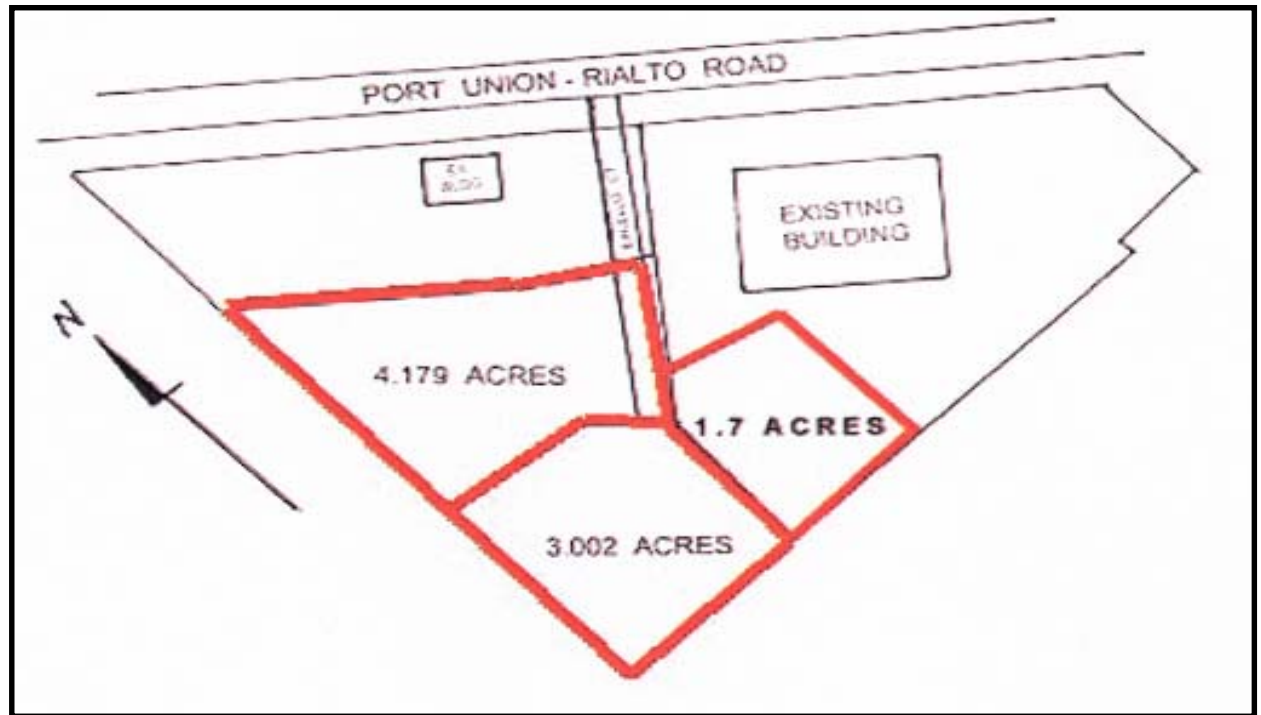




# AVAILABLE

## Industrial Land



### Excello Court West Chester Township Butler County, Ohio



- ▲ 2-8.8 acres
- ▲ All Utilities Available
- ▲ Flat Topography
- ▲ Minutes to I-275 and Tri County Area

### FOR MORE INFORMATION, CONTACT:

Frank Torbeck  
[frank.torbeck@everestrealstate.com](mailto:frank.torbeck@everestrealstate.com)  
 513-769-2505

Harold Schuck  
[harold.schuck@everestrealstate.com](mailto:harold.schuck@everestrealstate.com)  
 513-769-2513

COMMERCIAL REAL  
ESTATE SERVICES

Sycamore Office Park  
 9912 Carver Road  
 Suite 100  
 Cincinnati, OH 45242

TEL: 513-769-2500  
 FAX: 513-769-2512

[www.everestrealstate.com](http://www.everestrealstate.com)



The information submitted is not guaranteed. Although obtained from reliable sources, it is subject to errors, omissions, prior sale and withdrawal from the market without notice.