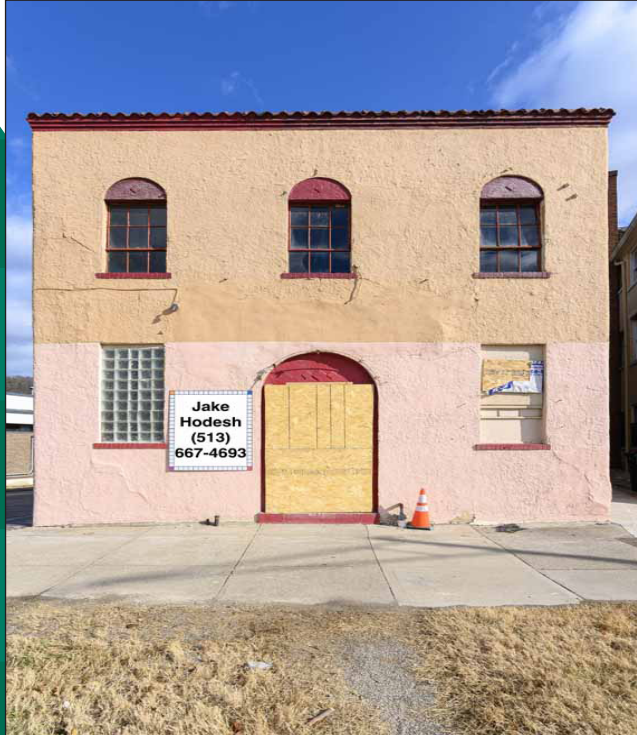


Commercial Space For Lease

Over the Rhine District Cincinnati, Ohio

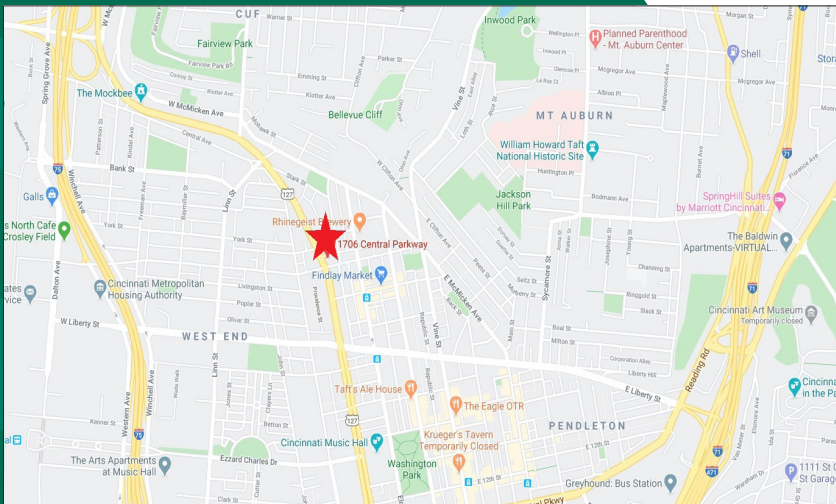


FEATURES:

- **Currently being renovated, so tenant can get involved in finish selections - paint colors, fixtures, etc.**
- Private parking spaces
- Private building. Single tenant.
- Would make a great: Bar, Restaurant, Cafe
- OTR / Brewery District
- One block to Rhinegeist
- Two blocks to Findlay Market
- Walk to new FCC Soccer stadium
- Close to Clifton and "pill hill"
- Approximately 2000 square feet of office space spread over two floors.
- Currently under construction
- Lease rate: \$3,250/Month Gross

LOCATION:

**1706 Central Parkway
Cincinnati, Ohio 45214**



CONTACT:

Jake Hodesh

jake@hodesh.com

513/667-4693

Owner/Agent



COMMERCIAL REAL ESTATE SERVICES

WEB www.everestrealstate.com TEL 513-769-2500 FAX 513-769-2512

9902 Carver Road, Sycamore Office Park, Suite 105, Cincinnati, Ohio 45242