

11326 Tamarco Drive

Address/City/County: 11326 Tamarco Drive
Blue Ash/Hamilton County

Available: 8,412 SF available (1,082 SF office)

Type of Construction: Structural steel, corrugated metal

Zoning: Light Industrial; M-4

Clearance Height: 19'-22'

Floor: 6" concrete

Drive In Doors: (2) 10' x 12' and 10' x 10'

Lighting: LED

Parking: 3: 1000 SF

Electric: 240 Volt, 1 phase

Roof: New, metal roof 2020

Heat & A/C: Office: forced air
Warehouse: suspended gas units

Lease Rate: \$7.50 PSF modified gross



www.everestrealstate.com

TEL 513-769-2500

FAX 513-769-2512

9902 Carver Road

Sycamore Office Park

Suite 105

Cincinnati, Ohio 45242

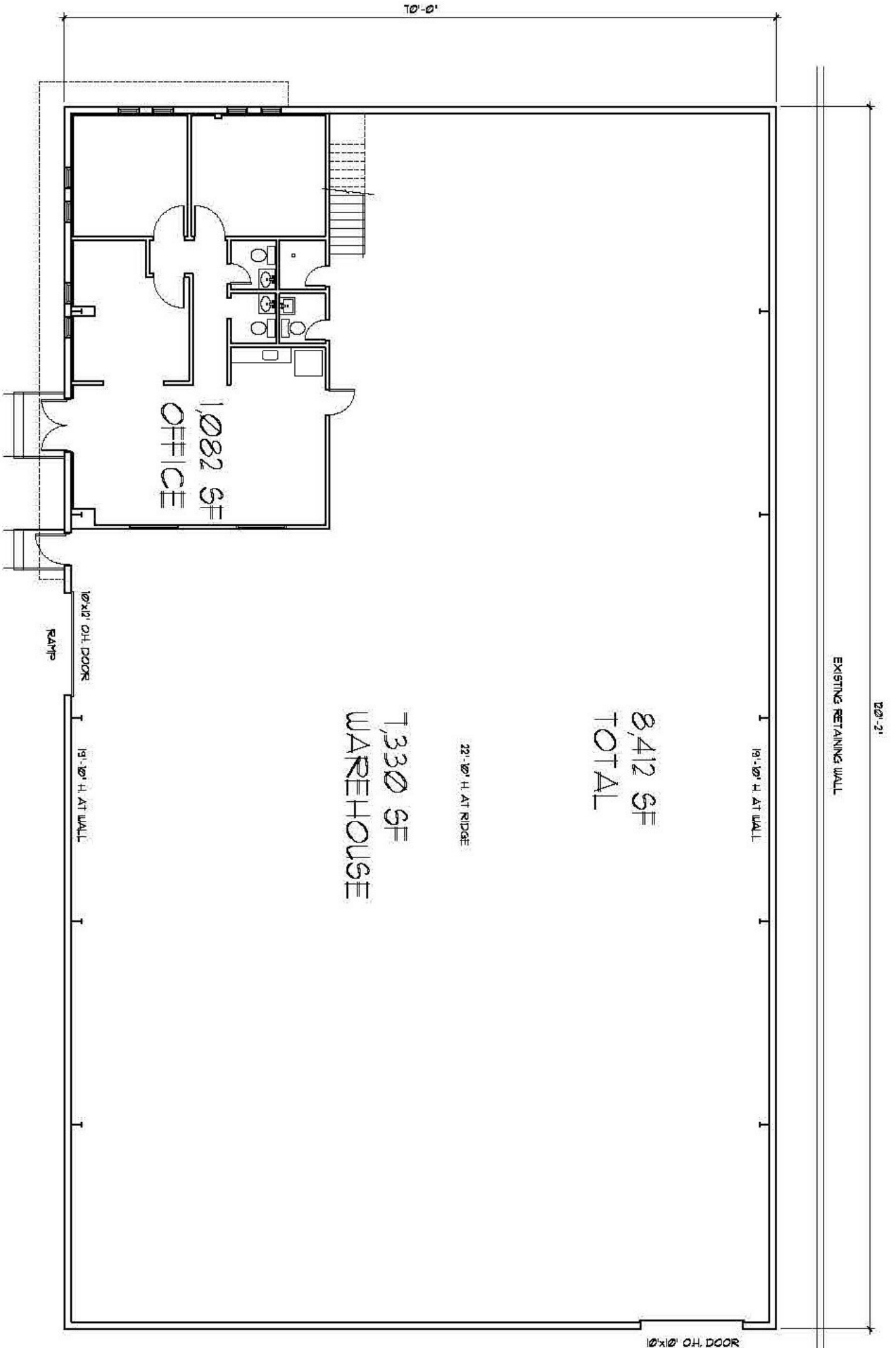


FOR MORE INFORMATION, CONTACT

Adam Simon

adam.simon@everestrealstate.com

513/769-2507



20'-2"

EXISTING RETAINING WALL

19'-10" H. AT WALL

8,412 SF
TOTAL

22'-10" H. AT RIDGE

1,330 SF
WAREHOUSE

1,082 SF
OFFICE

10'x10' OH. DOOR

RAMP

19'-10" H. AT WALL

10'x10' OH. DOOR

10'-0"