

Office Space For Lease

Blue Ash

CARVER POINTE



FEATURES

- **Spaces Available:**
1,500 SF
3,050 SF
- Beautifully updated common areas
- Corporate campus setting
- Reed Hartman exposure
- Adjoins Summit Park
- Abundant windows
- Convenient Blue Ash location
- Easy access to I-71 & I-275
- Exterior signage available
- Lease rate: \$13.95 PSF (\$0.55)



LOCATION

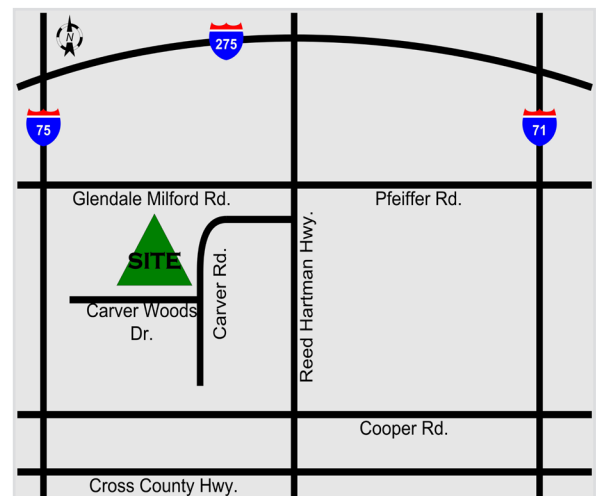
Carver Pointe
4410 Carver Woods Drive
Blue Ash, Ohio 45242

CONTACT

Adam Simon
adam.simon@everestrealstate.com
513/769-2507



www.everestrealstate.com
9902 Carver Road, Suite 105, Cincinnati, Ohio 45242



Carver Pointe adjoins Summit Park!



Summit Park is a 130-acre world-class park in the heart of Blue Ash where visitors enjoy great restaurants, recreation activities for the whole family and shopping in one of the region's most beautiful settings. Comprised of five distinct areas to work, eat, shop, live and play" The District, Carver Woods, Parkside, Daventry and Summit Park.

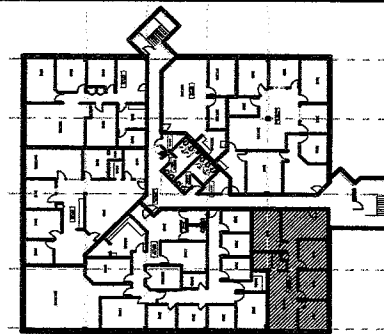
PARK FEATURES INCLUDE:

- Great Lawn
- Event Space
- Large Performance Stage
- Pergolas
- Dog Park
- Walking Trails
- Glass Canopy
- Observation Tower
- Cincinnati's most creative children's playground
- Children's Nature Playscape
- Seasonal Skating Rink
- Sledding Hill



RESTAURANTS AT SUMMIT PARK:

Brown Dog Cafe
Nanny Belle's
Tahona Kitchen + Bar
Senate



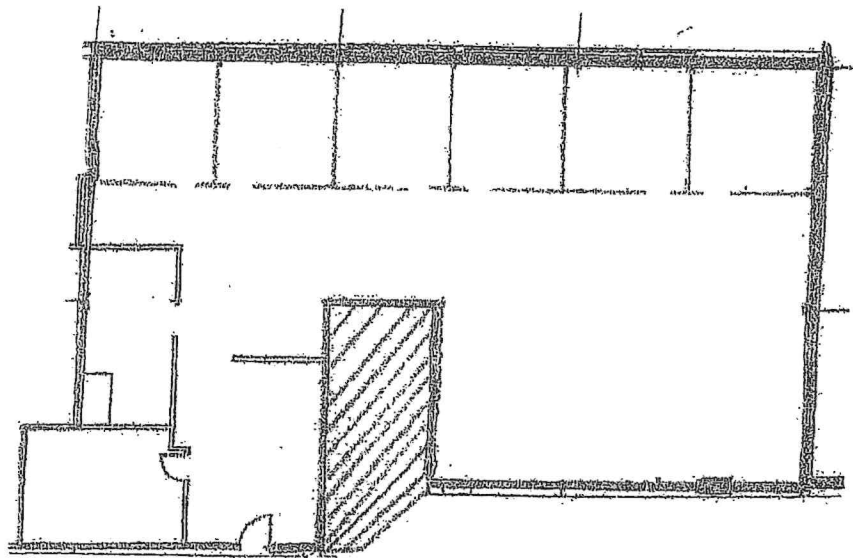
Jaymar Cole
BUILDING DEVELOPMENT
CARVER WOODS OFFICE PARK
4410 + 4412 CARVER WOODS
CINCINNATI, OH 45242

**Intertech Design
Services, Inc.**

Architecture and Engineering

9071 Sandpiper Rd.
San Diego, CA 92126
Phone: (619) 474-7226
Fax: (619) 732-1923
Web: <http://www.intertech.com>

[illegible]



Carver Woods
Suite 103