

Office Space For Lease

Blue Ash

9900 CARVER ROAD



FEATURES

- Beautifully updated common areas and atrium
- Reed Hartman exposure
- Proximity to Summit Park
- Abundant windows
- Convenient Blue Ash location
- Easy access to highways
- Free Rent Available
- **Lease rate: \$15.95 PSF (\$0.50/SF Electric)**
 - **1,179 SF Available - Suite 100**
 - **3,300 SF Available - Suite 200**

LOCATION

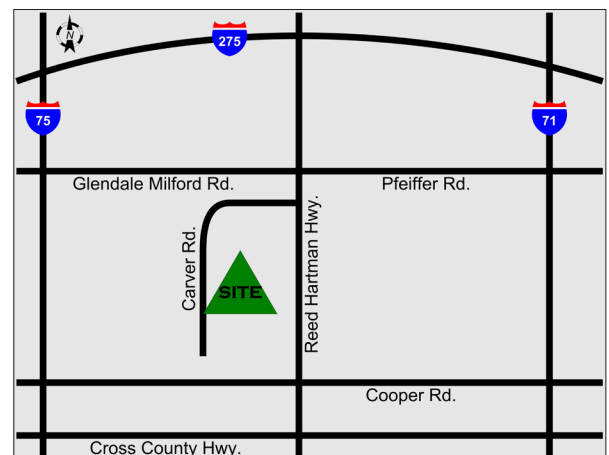
9900 Carver Road
Blue Ash, Ohio 45242

CONTACT

Adam Simon

adam.simon@everestrealestate.com

513/769-2507



www.everestrealestate.com

9902 Carver Road, Suite 105, Cincinnati, Ohio 45242

The information submitted is not guaranteed. Although obtained from reliable sources, it is subject to errors, omissions, prior sale and withdrawal from the market without notice.

9900 Carver Road

Located in the heart of Blue Ash, Cincinnati's largest suburban office market, 9900 Carver Road has been tastefully updated to meet your professional office requirement. Experience an elegant and affordable office solution that sits at the gateway to Summit Park, and is minutes from anywhere in Blue Ash and all major Highways!

Demographics

Population

1 Mile	6,346
3 Mile	57,755
5 Mile	157,018

Households

1 Mile	2,565
3 Mile	24,039
5 Mile	65,279

Average Household Income

1 Mile	\$140,479
3 Mile	\$119,823
5 Mile	\$113,591

Number of Businesses	2,500
Number of Employees	50,000+

CONTACT

Adam Simon

adam.simon@everestrealestate.com
513/769-2507



9900 Carver Road

Located in the heart of Blue Ash, Cincinnati's largest suburban office market, 9900 Carver Road has been tastefully updated to meet your professional office requirement. Experience an elegant and affordable office solution that sits at the gateway to Summit Park, and is minutes from anywhere in Blue Ash and all major Highways!

Demographics

Population

1 Mile	6,346
3 Mile	57,755
5 Mile	157,018

Households

1 Mile	2,565
3 Mile	24,039
5 Mile	65,279

Average Household Income

1 Mile	\$140,479
3 Mile	\$119,823
5 Mile	\$113,591

Number of Businesses	2,500
Number of Employees	50,000+



CONTACT

Adam Simon

adam.simon@everestrealestate.com
513/769-2507

Carver Road is close proximity to Summit Park!



Summit Park is a 130-acre world-class park in the heart of Blue Ash where visitors enjoy great restaurants, recreation activities for the whole family and shopping in one of the region's most beautiful settings. Comprised of five distinct areas to work, eat, shop, live and play" The District, Carver Woods, Parkside, Daventry and Summit Park.

PARK FEATURES INCLUDE:

- Great Lawn
- Event Space
- Large Performance Stage
- Pergolas
- Dog Park
- Walking Trails
- Glass Canopy
- Observation Tower
- Cincinnati's most creative children's playground
- Children's Nature Playscape
- Seasonal Skating Rink
- Sledding Hill

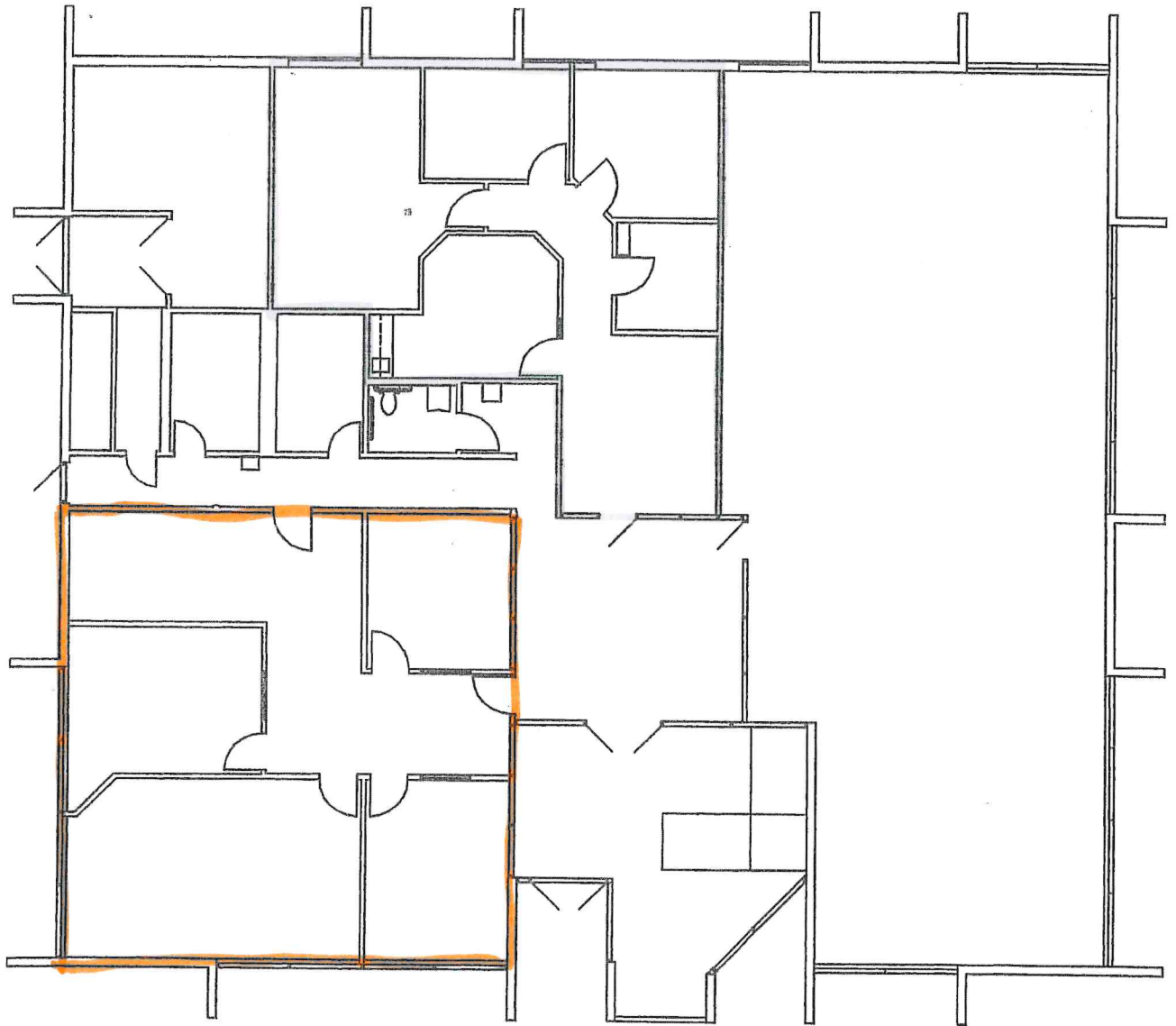


RESTAURANTS AT SUMMIT PARK:

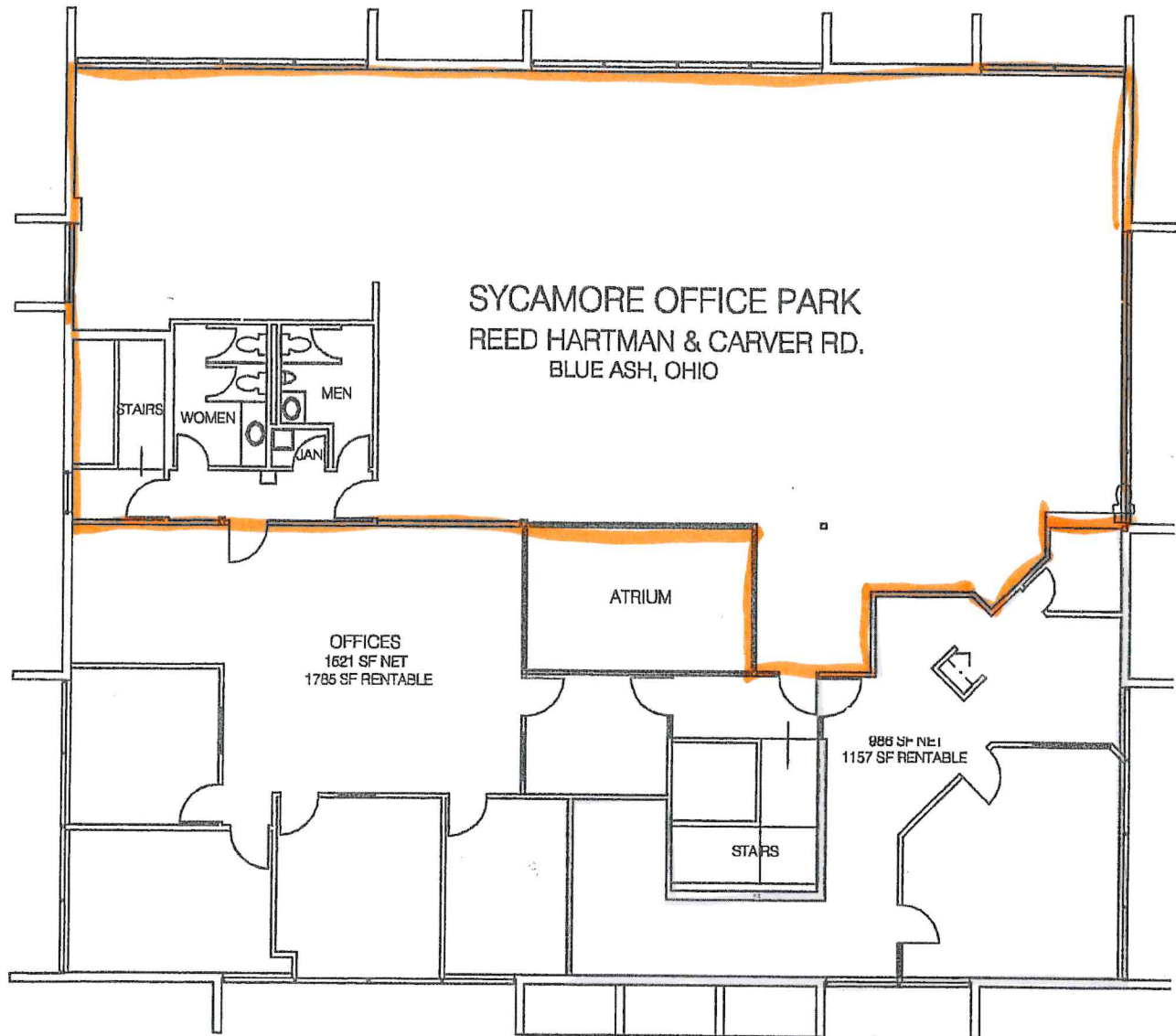
Brown Dog Cafe
Nanny Belle's
Tahona Kitchen + Bar
Senate



SYCAMORE OFFICE PARK
REED HARTMAN & CARVER RD.
BLUE ASH, OHIO



1ST FLOOR PLAN
9900 CARVER RD



2ND FLOOR PLAN
9900 CARVER RD